

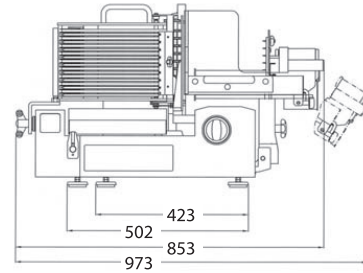
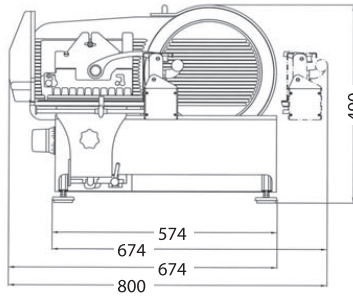
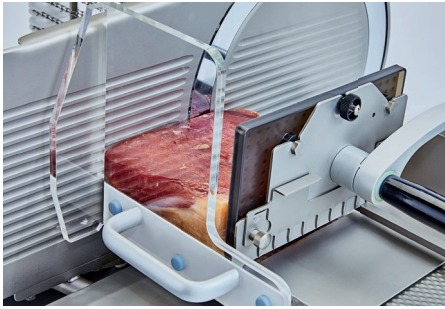
VA 4000



## Fully-Automatic Food Slicer





- ▶ 99 easily programmable slicing programmes (PLU). User-friendly, self-explanatory symbolic keyboard.
- ▶ Graphical representation of the slicing programme.
- ▶ Operator is led through the programme on the display.
- ▶ Up to 4 stacks or up to 9 shingled portions side by side and up to 9 layers on top of the other.

# VA 4000



## Technical Data

<b>Counter Space required</b>	(L x W): 574 x 502 mm
<b>Overall Dimensions</b>	(L x W x H): 620 x 853 x 660 mm
<b>Carriage</b>	(L x W): 275 x 360 mm
<b>Weight</b>	ca. 80 kg
<b>Voltage</b>	3-phase or 1-phase, voltage and cycles as required
<b>Power Requirement</b>	0,6 kW
<b>Sound Level</b>	<70 dB (A)
<b>Blade</b>	330 mm 6, hollow-ground, hard chromed, stay sharp quality
<b>Slice Thickness</b>	0 – 10 mm (infinitely variable)
<b>Cutting Length</b>	255 mm
<b>Cutting Height</b>	195 mm
<b>Capacity Speed of Carriage</b>	infinitely variable, about 25 - 55 strokes per minute
<b>Precise Slicing</b>	Because of separate gear motor for blade rotation. Therefore 98% power transmission by direct gear drive.
<b>Cutting Heights</b>	Easy calling up by entering the PLU-number with max. 3 digits between 001 and 999. With every PLU-number there are programmed all necessary slicing data, such as name of article, speed of the carriage, slice thickness and all parameter for stacking, shingling down, shingling cross or circle shingling.

<b>Stacking</b>		<b>1 - 4 stacks</b> per slicing procedure adjustable, maximum cutting height 80 mm
<b>Shingling down</b>		Shingling distance down up to 30 mm (infinitely variable), per slicing procedure <b>1 - 2 shingled portions</b> side by side und up to 9 layers on top of the other
<b>Shingling cross</b>		Shingling distance down and cross up to 30 mm (infinitely variable), per slicing procedure <b>1 - 9 shingled portions</b> side by side und up to 9 layers on top of the other
<b>Circle shingling</b>		<b>Circle shingling</b> with a diameter of up to 230 mm and up to 9 layers on top of the other
<b>Security and Hygiene</b>	Model VA 4000 corresponds to legal security and hygienic requirements. Sharpening device is removable. Carriage can be tilted aside for cleaning. Chain frame, stacking device and receiving plate are removable. Machine body and all metal parts in contact with food are <b>made of stainless steel</b> .	

## Special Executions

### VA 4000 Teflon

Tefloned execution, ideal for slicing cheese. Carriage, thickness plate, blade guard and blade are tefloned. Easy and precise slicing, no smearing and no sticking. Further advantage: quick and easy to clean with dry cloth.  
All other technical details as VA 4000.

### With large Carriage

ideal for large food products. All other technical details as above. Special executions upon request.

<b>Overall Dimensions</b>	(L x W): 275 x 530 mm.
---------------------------	------------------------

### With Clawend Pieceholder

instead of standard end piece holder

### With Table for Slicer

Made of stainless steel

<b>Overall Dimensions</b>	(L x W x H): 735 x 645 x 670 mm.
---------------------------	----------------------------------

### Conveyor Belt

See leaflet model VA 4000 AT.

### VA 4000 P

Special execution model VA 4000 P prepared for connection to **automatic wrapping machine** and/or **interleaver**. With receiving fork for transportation of the sliced portion to the wrapping machine, with or without tray.